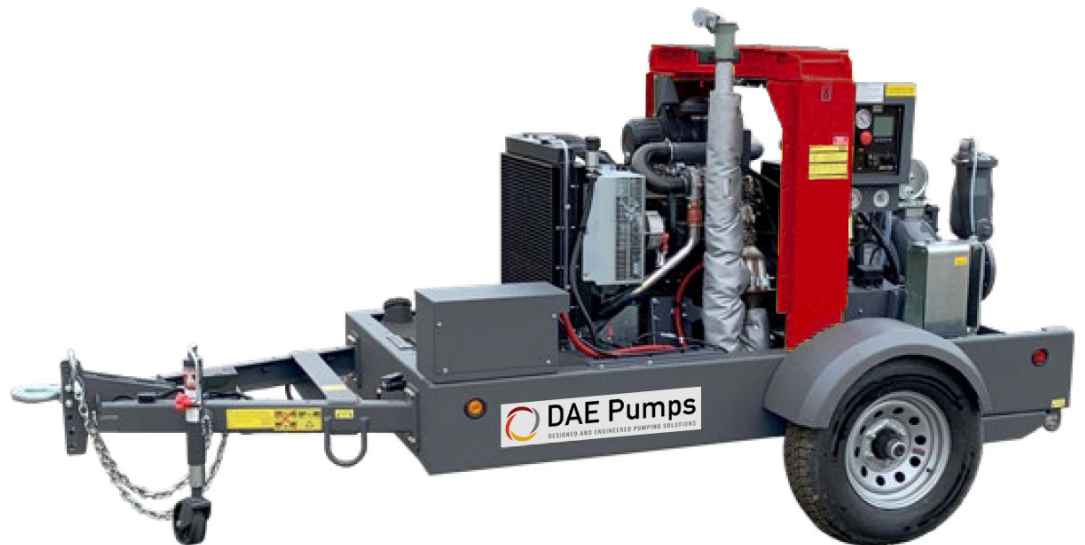


# APPALACHIAN 66K

## Self-Priming Surface Pump



**DAEPUMPS.COM**

info@daepumps.com

(760) 821-8112

# Appalachian 66K

Diesel / 74 HP / 2,640 GPM / 166' Head



## Benefits

### Efficiency

The 12" impeller with 79% efficiency at B.E.P. provides best pumping result with minimal efforts

### Solid's handling

Closed impeller type with solids handling capability of 3" for trouble free operation

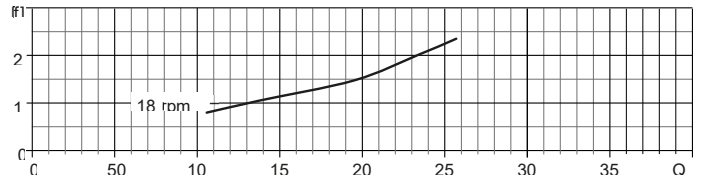
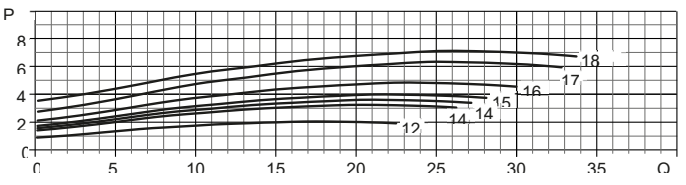
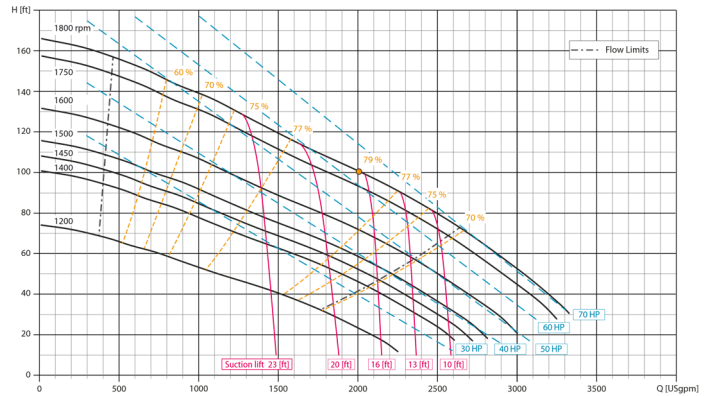
### Easy maintenance

Hinged cover for direct access to the impeller and pump volute

### Polyethylene Fuel tank

Corrosion-free PE tank provides longer lifetime and avoids tank cleaning due to oxidation

## Performance Curve



Losses from priming system and check valve not included

## Appalachian Series

The pump system consists of a centrifugal pump and a separator, which enables air to be separated from the liquid and be sucked by a vacuum pump - making automatic priming possible. Even with suction heights of several feet the machine rapidly evacuates the air from the suction pipe and starts to pump. The Appalachian series range is also suitable for pumping liquids with solids in suspension with best possible efficiency.

## Applications

The Appalachian 66K pump is designed to withstand toughest applications and delivers best in class pumping efficiency. One of the most common areas of utilization is the mining and Oil & Gas segment where reliability, efficiency and versatility is the key to provide a customized solution. Other suitable applications within Construction and General dewatering, Municipal as well as General Industry are ideal for the Appalachian 66K pump. Self-priming pumps by DAE Pumps are packed with features that not only meet but exceed the needs of our customers.

**Test according to UNI EN ISO 9906 standard - level 2B**  
**Test liquid: clean water, density 62.43 lb/ft<sup>3</sup> (8.345 lb/gal)**

Speed	Impeller Dia.	Solids Dia.	Ns	Suction	Discharge	No. Vanes
Various	12" / 315 mm	3" / 76 mm	1800 rpm	6" / 150 mm	6" / 150 mm	2

## Technical Data

### Pump

Model	Appalachian K66 (Soundproof / Open Tow)
Qmax	2,640 GPM
Hmax	166 ft
Q max eff.	2,010 GPM
Eff. max	79%
Suction port	6" Flange – ANSI class 150
Delivery port	6" Flange – ANSI class 150
Impeller type	Closed, 2 vane
Solids handling	3"
Material	G11
Casing	ASTM A536 ductile iron
Impeller	ASTM A536 ductile iron
Wear ring / Wear plate	ASTM A48 Class 20 grey iron
Shaft	AISI 630 stainless steel
Mechanical seal	Silicon carbide / Silicon carbide / VITON
Elastomers	NBR + VITON
Lubrication	Grease (bearing)
Check Valve	ASTM A536 ductile iron + NBR rubber flap
Separator	Aluminum alloy

### Priming system

Vacuum pump	
Vacuum pump type	Diaphragm
Nominal air capacity	50.0 cfm
Max vacuum	- 26.6 inHg
Drives	Link belt

### Engine

Make	Kohler
Model	KDI 2504 TCR
Type	Diesel turbo common rail
Displacement	2.5 Liter (151 in <sup>3</sup> )
No. cylinders	4
Cooling	Liquid with radiator
Rpm type	Variable
Standard speed	1800 rpm
US emissions	EPA Tier 4F
Starting	Electric
Engine system voltage	12 V
Engine Power Rating	74 HP

## Control panel

Model PW 900

Manual operation

Automatic operation: start-stop with transducers or floats

FleetLink Optional

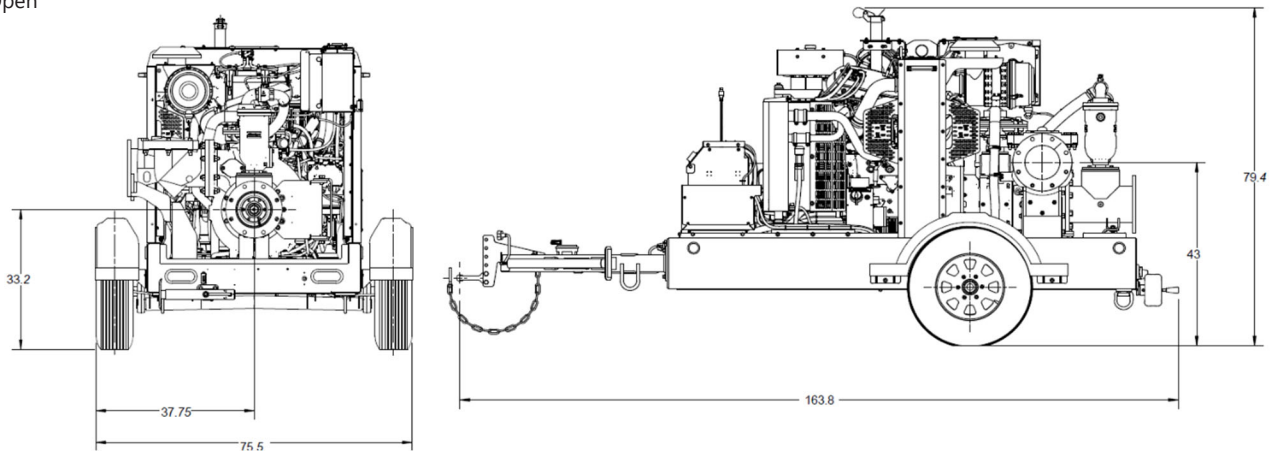
## Arrangement

### Technical data

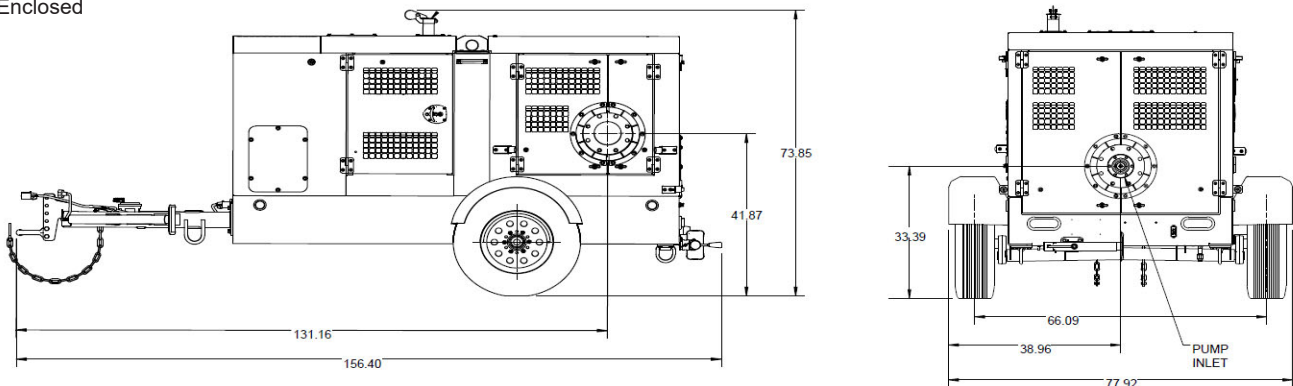
Material	ASTM A36 steel
Coatings	Epoxy powder, average thickness of 3 MIL
Features	Lifting beam. Forklift pockets. Pump access through hinged door. Protected PE fuel tank.
Battery	Acid charge Pb-Ca maintenance free 12V – 1100 CCA
Fuel Tank Capacity	90 USG Net Fuel capacity
Fuel Consumption	3.5 US Gal/hr @1800 rpm @BEP
Dry weight	3, 470 lbs. (Open) / 4, 020 lbs. (Enclosed)
Wet Weight	4,100 lbs. (Open) / 4, 650 lbs. (Enclosed)

## Dimensional Drawing

Open



Enclosed



Inches